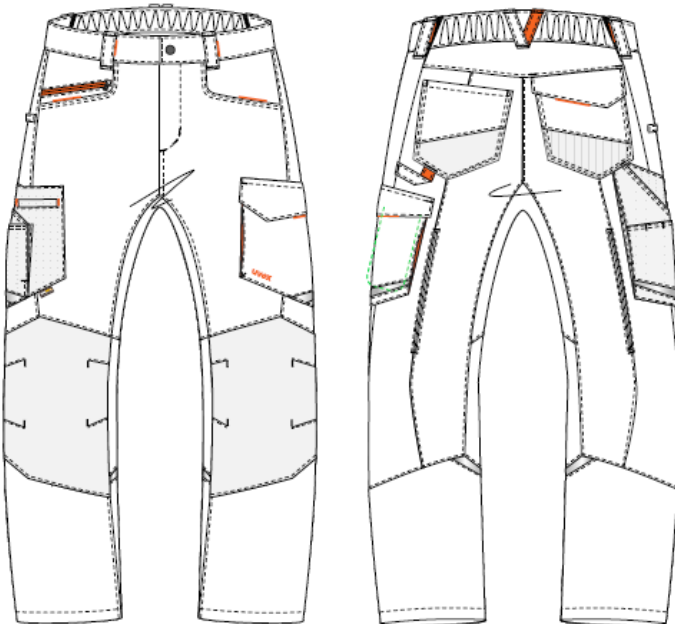


workwear uvex suXNeed



Cargo pants regular fit

model-no.: 8997

colour: navy

graphite

material: 65 % Polyester, 35 % Cotton

245 g/m²

size: 42-66,90-110,23-32

sales unit: 1 part

PPE-category II

EN 14404



Type 2-Level 1



INDUSTRIALWASH ●●

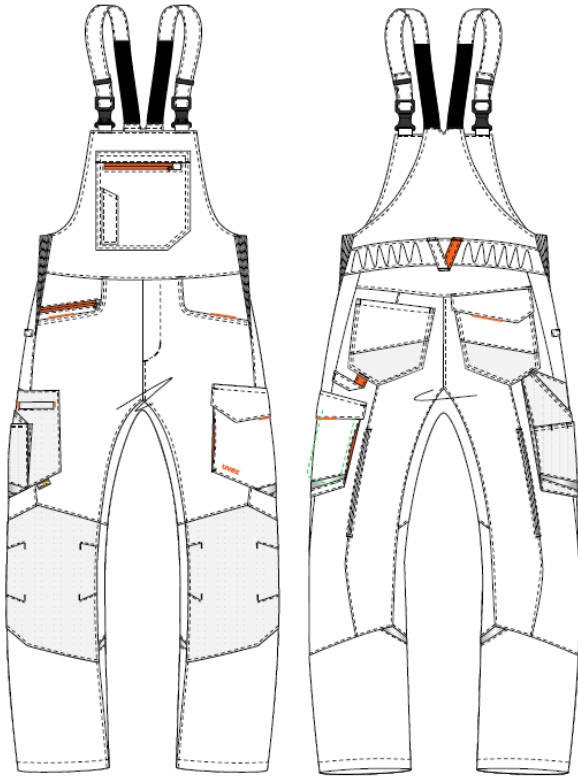
product description:

- Innovative style and a new fit for every application with a flexible waistband
- Insert in crotch area
- Cordura insets on heavy used places such as: knees, right leg pocket and left pocket
- practical bags for the working tools,
- EN 14404:2004 + A1:2010 Type 2 in connection with kneepads 9868900
- Oeko-Tex® Standard 100

The declaration of conformity for this product can be viewed at: uvex-safety.com/ce

OEKO-TEX®
CONFIDENCE IN TEXTILES
STANDARD 100
S20-0516 HOHENSTEIN HTTI
Tested for harmful substances.
www.oeko-tex.com/standard100

workwear uvex suXNeed



Dungarees

model-no.: 8998

colour: navy
graphite

material: 65 % Polyester, 35 % Cotton
245 g/m²

size: 42-66,90-110,23-32

sales unit: 1 part

PPE-category II

EN 14404



Type 2-Level 1



INDUSTRIALWASH●●

product description:

- Innovative style and a new fit for every application with laterally stretch inserts
- Insert in crotch area
- Cordura insets on heavy used places such as: knees, right leg pocket and left pocket
- practical bags for the working tools,
- EN 14404:2004 + A1:2010 Type 2 in connection with kneepads 9868900
- Oeko-Tex® Standard 100

The declaration of conformity for this product can be viewed at: uvex-safety.com/ce

OEKO-TEX®
CONFIDENCE IN TEXTILES
STANDARD 100
S20-0516 HOHENSTEIN HTTI
Tested for harmful substances.
www.oeko-tex.com/standard100

workwear uvex suXNeed



Model-nr.: 8997
Art.-Nr.: 89668 (navy)
89669 (graphite)



Model-Nr.: 8998
Art.-Nr.: 89702 (navy)
89703 (graphite)

With kneepockets
(suitable kneepads available as
Art.-Nr. 9868900)